

# ASSEMBLE IN THE FOREST

14 JUNE - 14 JULY 2023

**BOOKING NOT REQUIRED FOR GENERAL ADMISSION JUST COME & EXPLORE!**



## WEDNESDAY 14 JUNE OPENING NIGHT

6:00PM **BOOK NOW**

Forest of Imagination opens

### PERFORMANCES

6:00PM  
Slam Out Loud, film

6:20PM  
Toby Thompson, spoken word

**SPEECHES FROM 6:30PM**  
Professor Sue Rigby  
Andrew Grant  
Tom Boden  
Margaret Heffernan

### SHORT TALKS/PERFORMANCES

Morag Myerscough  
Andrew Amondson  
Martyn Ware & Oscar Blustin  
Ian Forrester, BBC R&D,  
and Kathy Hinde,  
Rabbit Holes Collective

**FROM 7:00PM**  
Patchlarks, Mysteries of the Mini-Forests

7:40PM  
Canopy film

8:00PM  
Forest of Imagination closes for the night

**FOREST OF IMAGINATION IS FREE, AND WELCOMES ALL AGES**



## TALKS, INSTALLATIONS, WORKSHOPS & MORE...

Please note, workshops are subject to change.

## THURSDAY 15 JUNE 6-7PM ONLINE

George Monbiot in conversation with Andrew Grant, chaired by Dr. Penny Hay

**BOOK NOW**

## FRIDAY 16 JUNE 10AM-4PM

**DOCUMENTATION SPACE**  
Patchlarks, Mysteries of the Mini-Forests  
A show about the wondrous worlds in a patch of moss.  
**PREBOOKED FOR SCHOOLS**

11AM-12PM **BOOK NOW**

Holly Dabbs  
**EARLY YEARS FAMILY SESSION**

11.30AM-12.30PM  
Roundtable with Wera Hobhouse including lunch with Bath Community Kitchen

**BOOK NOW**

## 17 - 30 JUNE THE EGG

Family Portrait, Natasha Gilmore and her children  
This stunning film is playing on a loop every 35mins, see website for days and times.

**SEE TIMES**

## SOCIAL SHARING

Please share your photos using #PlayfulBath

@forestofimagination  
 Forest of Imagination  
 @forestimaginatn



## SATURDAY 17 JUNE 10AM-4PM

**DOCUMENTATION SPACE**  
Patchlarks, Mysteries of the Mini-Forests  
A show about the wondrous worlds in a patch of moss.  
Check show times at the event.

**BOOK NOW**

## 12-3PM IN THE GARDEN

Bath Community Kitchen & FoodCycle  
**WORKSHOP**

**BOOK NOW**

## 2-3PM BALLROOM

Hannah McDowell, Canopy and family  
**STORYTELLING WORKSHOP**

**BOOK NOW**

## 2-4PM IN THE CITY

Sam Furness, Creative Quests

**BOOK NOW**

## 3-4PM

**DOCUMENTATION SPACE**  
Frances Gynn  
**PUBLIC ERASURE**

**BOOK NOW**

## 12-6PM RSA HOUSE, LONDON

Mya-Rose Craig at the RSA Fellows Festival

**BOOK NOW**

## SUNDAY 18 JUNE 10.30AM-12PM IN THE CITY

Bathscape, Leafy Legacies  
**URBAN TREESCAPE TRAILS**

**BOOK NOW**

## 11AM-12.30PM (DROP IN)

**BALLROOM**  
Kate Petty - Relaxed Musical Moments in the Forest

**BOOK NOW**

## 1.30-4PM BALLROOM

Kate Petty and Sarah Latto, Finding your voice in the forest  
**OPEN WORKSHOP**

**BOOK NOW**

## MONDAY 19 JUNE 4.30PM ONLINE

Noah Sobe, UNESCO

**BOOK NOW**

## WEDNESDAY 21 JUNE 6-7PM ONLINE

RSA Regenerative Design leads & Andrew Grant guests

**BOOK NOW**

## THURSDAY 22 JUNE 6-7PM IRL

Rob Hopkins

**BOOK NOW**

## FRIDAY 23 JUNE 11AM-12PM

Holly Dabbs  
**EARLY YEARS FAMILY SESSION**

**BOOK NOW**

## SATURDAY 24 JUNE 12-3PM

Bath Community Kitchen & Bath Welcomes Refugees Syrian Feast at the Forest

**BOOK NOW**

## SUNDAY 25 JUNE 11-2PM (DROP IN)

**GARDEN WORKSHOP**  
Clare Day, Sitting Quietly With The Moon

**BOOK NOW**

## WEDNESDAY 28 JUNE 2-4:30PM

**DOCUMENTATION SPACE**  
Niki McCretton, Discovering Your Co-Creation Process  
**WORKSHOP**

**BOOK NOW**

## THURSDAY 29 JUNE (5-6PM RSA BATH PRE-MEET) 6-7PM + RSA IRL

Margaret Heffernan and David Lambert

**BOOK NOW**

## SATURDAY 1 JULY 12-3PM

Bath Community Kitchen & Bath Welcomes Refugees Syrian Feast at the Forest

**BOOK NOW**

## SAT/SUN 1-2 JULY 10.30AM-12.30PM + 1.30-3.30PM

**DOCUMENTATION SPACE**  
Morgane Shaban and Holly Le Var - The Creatures of the Forest Assembling

**BOOK NOW**

## TUESDAY 4 JULY 4-5.30PM IRL

The IMAGI-NATION troupe, human beings with story in their soul, and imagination in their heart

**BOOK NOW**

## WEDNESDAY 5 JULY 6-7PM IRL

Alison Bellwood and the World's Largest Lesson team, Avon Schools Eco Network, Jane Davidson (Future Generations, Wales)  
**WORLD'S LARGEST LESSON**

**BOOK NOW**



**BOOKING NOT REQUIRED FOR GENERAL ADMISSION WORKSHOPS, TALKS AND PERFORMANCES WILL REQUIRE BOOKING VIA eventbrite** **BOOK NOW** < Click or Scan >



Some events have unique links/QR codes.

## KEY PARTNERS

House of Imagination  
Grant Associates  
Feilden Clegg Bradley Studios  
Bath Spa University  
Invisible Studio  
Imagination  
National Trust  
Egg Theatre  
RSA  
Bathscape  
Rainforest Concern

Thanks for the kind funding from Arts Council England, Grant Associates, National Trust, Feilden Clegg Bradley Studios, Bath Spa University, GALA, RSA, Heritage Schools, St John's Foundation, Bath Mind, Kaleidoscope Collection, Bathscape and all local sponsors.

**CITY CENTRE MAP**

**SCAN OR CLICK TO ACCESS**

**BATHAMPTON MEADOWS MAP**



## THURSDAY 6 JULY 1-2PM ONLINE

Bayo Akomolafe

**BOOK NOW**

## 4-5PM

Dan Burgess  
**INTERACTIVE TALK**

## FRIDAY 7 JULY 11AM-12PM

Holly Dabbs  
**EARLY YEARS FAMILY SESSION**

## SATURDAY 8 JULY 12-3PM

Bath Community Kitchen collaboration with FoodCycle - turning waste food into a delicious free lunch for the good people of Bath

**BOOK NOW**

## SUNDAY 9 JULY 10.30AM-12PM IN THE CITY

Bathscape, Botanical Bounties  
**URBAN TREESCAPE TRAILS**

**BOOK NOW**

## 10-14 JULY 11AM-6PM

Bath Digital Festival

**BOOK NOW**

## TUESDAY 11 JULY 5-6.30PM

**DOCUMENTATION SPACE**  
Madeleine Holt, Dr Chris Bagley, Ian Pocock with Y12 YP Roundtable, chaired by Dr Penny Hay  
**YOUNG PEOPLE'S DIGITAL LEARNING ENVIRONMENTS, IMAGINING THE FUTURE**

**BOOK NOW**

## WEDNESDAY 12 JULY 4-5PM

**DOCUMENTATION SPACE**  
Rabbit Holes Collective, Roundtable discussion with Ian Forrester, Senior Firestarter, BBC R&D and Dr Penny Hay

**BOOK NOW**

## FRIDAY 14 JULY 11AM-6PM

**CLIMATE FOCUS**

## WEEKEND TALKS

Nature's Way RCA  
Rainforest Concern

## SUNDAY 6 AUGUST AMERICAN MUSEUM

Pop up event



## EVENT GUIDE

# ASSEMBLE IN THE FOREST

14 JUNE - 14 JULY 2023

**BOOKING NOT REQUIRED FOR GENERAL ADMISSION JUST COME & EXPLORE!**

Transforming the areas in:  
Bath Assembly Rooms, Bath BA1 2QH  
Bartlett Street and beyond...

[forestofimagination.org.uk](http://forestofimagination.org.uk)



**FREE**  
All ages welcome

Design by Imagination\* | Location plans by Grant Associates. Cover illustration by Perry Harris.

# ASSEMBLE IN THE FOREST

The spectacular Bath Assembly Rooms will be the venue for the 2023 Forest of Imagination where we will celebrate 10 years as a contemporary arts event in Bath. For 2023, the National Trust invited Forest of Imagination to the Bath Assembly Rooms while the charity uncovers the history of the building, tests and finalises plans for the future and undertakes building work ahead of opening a Georgian experience in 2026.

## OPENING TIMES

**PUBLIC OPENING:**  
Fri, Sat, Sun, Mon: 10am-4pm

**SCHOOLS:**  
Tues, Weds, Thurs: 10am-2pm

**EVENINGS**  
RSA talks (young people/adults)  
Weds, Thurs: 6-7pm



**FREE**  
All ages welcome

'Assemble in the Forest' is an invitation to come together and celebrate the beauty and biodiversity of Bath and once again to showcase the imagination of our community. In addition, it provides an opportunity to shine a light on the importance of forests across the world and what they mean to us in Bath, especially in response to the climate emergency.

Forest of Imagination is a contemporary arts and design event created by Grant Associates, House of Imagination and local creative industries that reimagines a familiar space to inspire everyone's creativity and heighten a sense of nature in an urban environment.

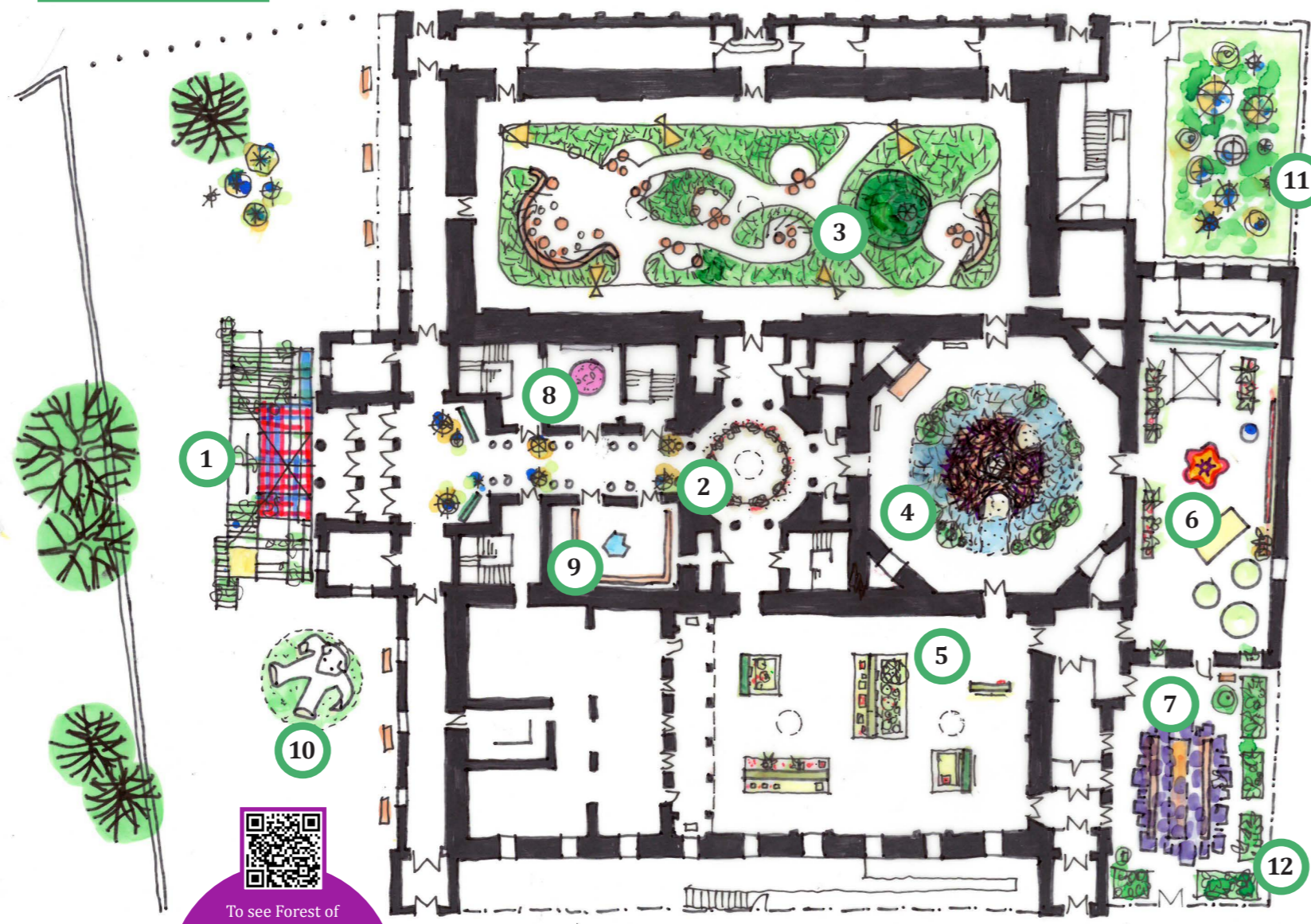
We are inspired by the opportunity to link art, nature, and the social life of the city into an experience that takes full advantage of the grand internal rooms and the distinctive outdoor spaces. All around the world people use forests as places to find respite, either individually or together.

Forest of Imagination is open to all and actively inclusive. We invite children, families and people of all ages to explore, make and learn in a creative, intuitive and imaginative way. This year Feilden Clegg Bradley Studios have created a pop-up House of Imagination as a creative making and performance space. Everyone is welcome, come along and play!

Andrew Grant (Grant Associates) and Dr. Penny Hay (House of Imagination and Bath Spa University)

## LOCATION MAP

## FOREST OF IMAGINATION 2023 • BATH ASSEMBLY ROOMS, BA1 2QH



To see Forest of Imagination continue to grow and return each year please donate by visiting [localgiving.org/charity/HoI/project/FOI/](https://localgiving.org/charity/HoI/project/FOI/)

Thank you for your support

## ACCESS INFORMATION

Level or ramped access to all installations. Accessible WC with left-hand transfer available, sorry no hoist or changing bed. Changeable sound and light levels throughout. Sorry no induction loop. Assistance dogs are welcome. More detailed information is available at [www.nationaltrust.org.uk/bath-assembly-rooms](https://www.nationaltrust.org.uk/bath-assembly-rooms)



## KEY

- Bird Song**  
Morag Myerscough/  
We Are The People
- Dark Forest**  
Matt Leece
- Wondering Ways**  
Andrew Amondson and  
Feilden Clegg Bradley  
Studios
- Beaver Den**  
Grant Associates/Invisible  
Studio/Charley Brentnall
- Tree Room**  
Grant Associates, Bathscape,  
National Trust and  
Rainforest Concern
- Documentation Space**  
House of Imagination/  
Amy Corcoran/Emily Boxall
- Community Forest Shelter**  
Invisible Studio/ Charley  
Brentnall & Reading  
University Students
- Sitting Quietly with the  
Moon**  
Clare Day
- Its Always Ourselves  
We Find In The Sea**  
Martyn Ware, Gabriel Ware,  
Oscar Blustin and Anna  
Söderblom
- Dreamer**  
Grant Associates
- Extraordinary Forest**  
House of Imagination and  
local schools
- Bath Community Kitchen  
Forest**  
Bath Community Kitchen



[forestofimagination.org.uk](https://forestofimagination.org.uk)

## PARTNERS, SPONSORS AND COLLABORATORS

## DONATIONS

### FOREST OF IMAGINATION 2023

We receive much of our funding from generous people like you. By setting up a regular donation to House of Imagination you can support our long-term work to enhance wellbeing and transform lives, communities and cities.

Reliable income means we can plan our work more effectively helping us to achieve more.

Look out for this button on our website:

Support our long-term work  
Localgiving.com  
Click to donate